



Biological Opinion

Pursue Changes to Decision 1610 Flows
CEQA/NEPA PROCESS

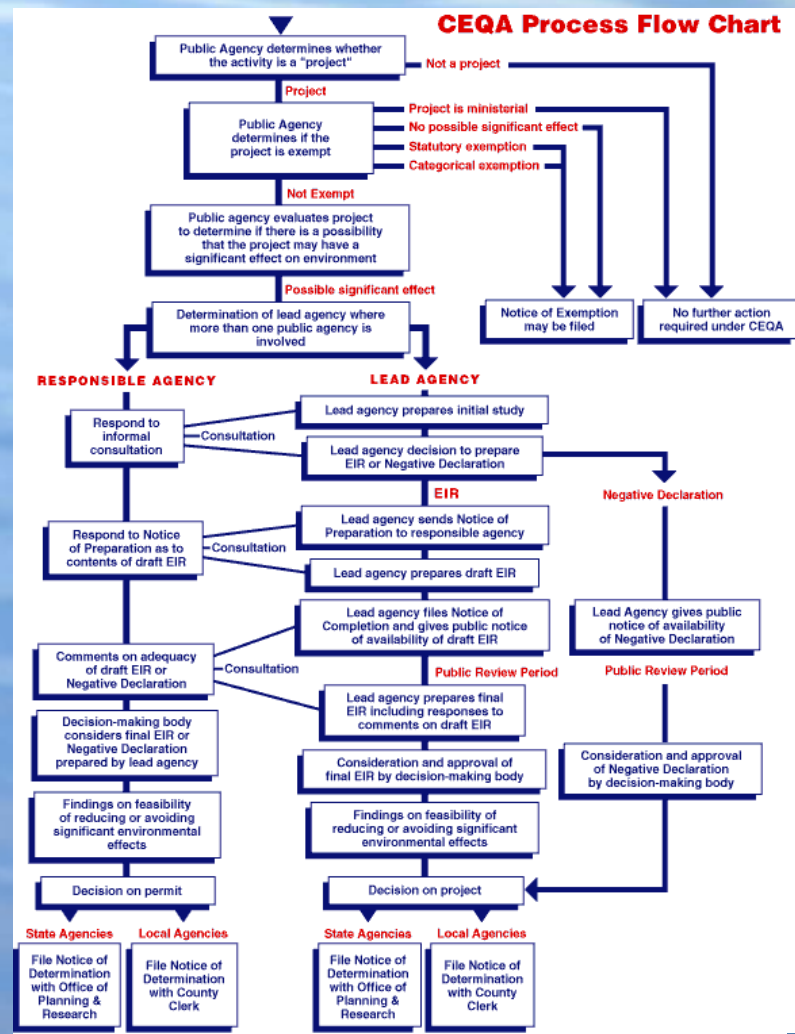


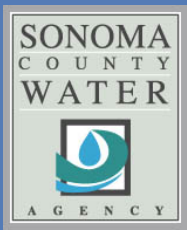
Jessica Martini-Lamb
Principal Environmental Specialist
Sonoma County Water Agency



Changes to Decision 1610

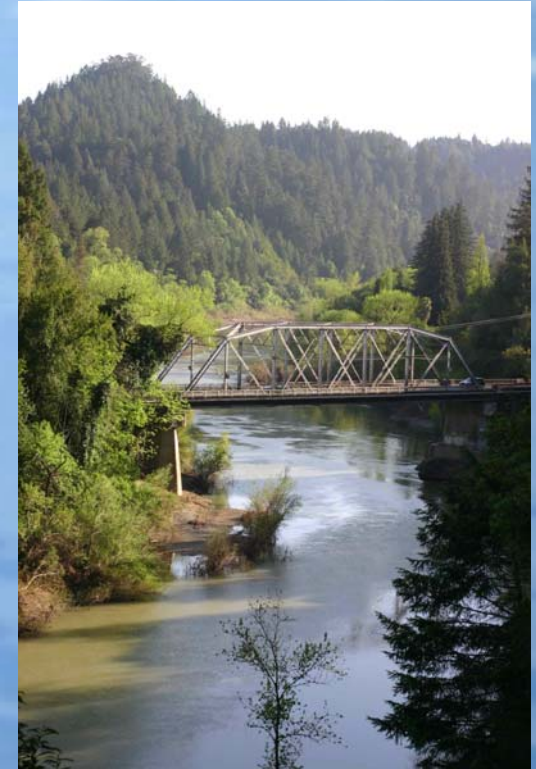
- Permanent and Interim Changes to Decision 1610 will Require Compliance with:
 - California Environmental Quality Act (CEQA)
 - National Environmental Policy Act (NEPA)





Interim Changes

- SWRCB will Require CEQA Document
- Evaluating Type of Environmental Compliance Document Needed
- Biological Opinion Requires Petitioning for Interim Flow Changes to Decision 1610 Beginning in 2010



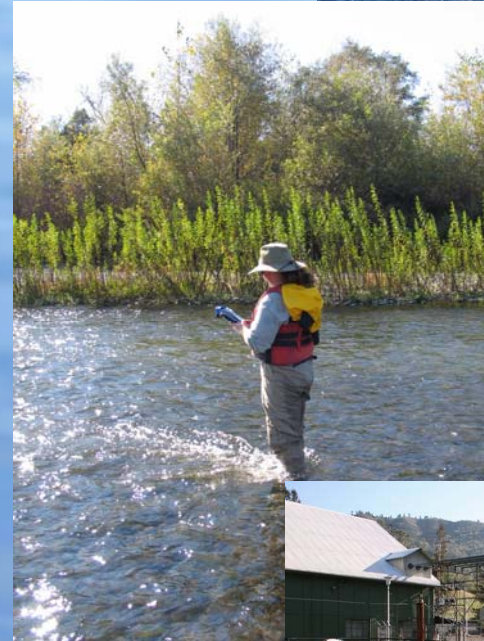
Permanent Changes

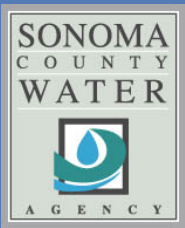
- Joint CEQA/NEPA Document
 - EIR/EIS will Address
 - Minimum Instream Flow Changes in Russian River and Dry Creek
 - Dry Creek Habitat Restoration (Long-term)
 - Dry Creek Bypass Pipeline
 - Estuary Management



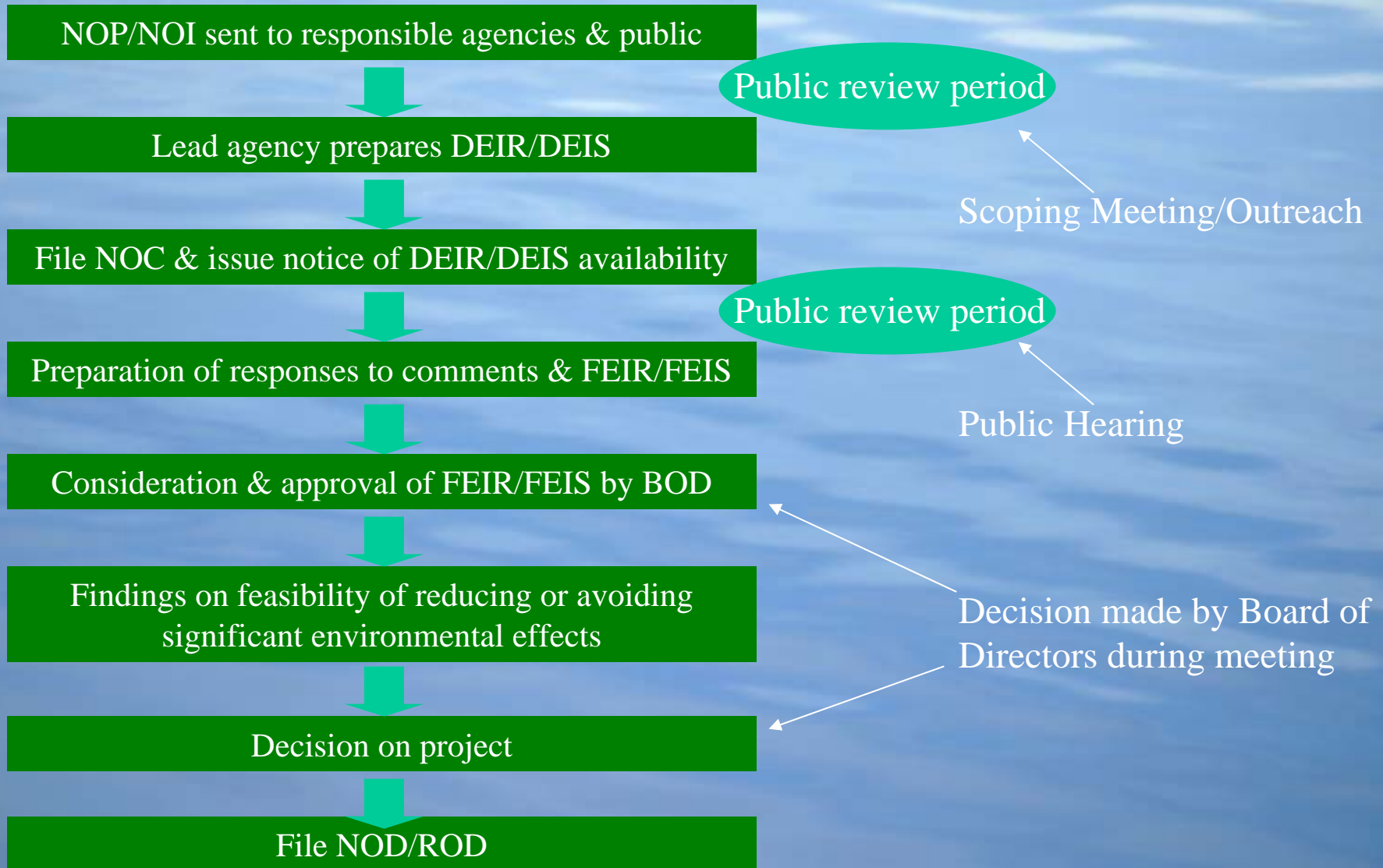
EIR/EIS Studies

- Evaluate effects of project on
 - Recreation
 - Socioeconomics
 - Biological Resources
 - Water Quality
 - Cultural Resources
 - Hydroelectric Facilities





EIR/EIS Process





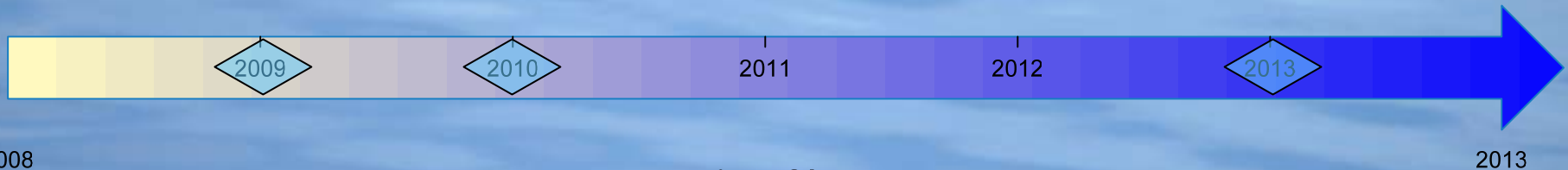
Biological Opinion Requirements

Permanent Changes

2009
File Petition to Change Decision 1610 within 1 Year of Issuance of Biological Opinion

2009-2010
Issue NOP/NOI within 6 Months of SWRCB Issuing Public Notice of Petition to Change Decision 1610

2013
SCWA Board of Directors to Certify FEIR/FEIS within 4 Years of Filing Petition to Change Decision 1610



Interim Changes

2009-2010
CEQA Document, Petition for Interim Change to Decision 1610

2010
Begin Interim Change until Permanent Changes Approved



Biological Opinion

Pursue Changes to Decision 1610 Flows
CEQA/NEPA PROCESS



Jessica Martini-Lamb
Principal Environmental Specialist
Sonoma County Water Agency

